

JetStor®

Storage. Solutions. Support.

SAS / SATA

4U

42 BAY

JetStor SAS 742J

HIGH PERFORMANCE JBOD SYSTEM

**1,600
MB/S!**



JetStor SAS 742J

JetStor SAS 742J is a 19-inch 4U rackmount JBOD unit. It comes with 42 hot-swappable bays and ideal for high capacity and scalability storage in most popular OS environments. Based on 6Gb SAS Channel host interfaces, the JetStor SAS 742J supports SAS2 or SATA3 drive configurations to deliver the best cost-performance index with higher bandwidth.

HIGHLY AVAILABLE DESIGN

The JetStor SAS 742J RAID system features fail-safe engineering for non-stop operations. A fully cableless design improves reliability. Dual hot-swappable power supplies with integrated turbo-cooling and separate power connections provide system tolerance of any component failure. SNMP or SMTP email notifications of all system events enables proactive maintenance.

NON-STOP ADS AVAILABILITY

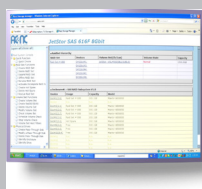
Almost all RAID levels are supported for precise configuration to your application's performance and protection requirements. Multiple drives may be designated as hot-spares allowing the system to transparently move data to a spare should an error be detected. Drives are hot-swappable, with automatic rebuilding of data on the new drive. Capacity can be increased and drives replaced while data remains on-line. For the greatest protection, RAID 6 with Advanced Data Sentry technology allows for continuous operations even with two simultaneous drive failures. Considering that RAID 6 ADS provides 1,000 times greater data protection than RAID 5, why trust your data to any other technology?

FEATURES

- 6Gb/s performance through three mini SAS (4x) external connections to support your most demanding applications.
- Utilizes industry-standard SCSI Enclosure Services to monitor enclosure and disk environmental conditions
- S.E.S. support for standard enclosure management
- Incorporates a cableless design for maximum signal integrity
- Field-replaceable major components allow for maximum convenience, uptime and configuration flexibility.
- Free telephone and email support.

WARRANTY

- Three to five years on disk drives, one year on BBM, three years on all other components.
- Optional advanced replacement program ships drive replacements within 24 hours. Optional on-site service also available.



RAID MANAGER

Proactively manage, configure and monitor all JetStor RAID systems from any browser.

www.raid.com
sales@acnc.com
800.213.2667



JetStor®

Storage. Solutions. Support.

SPECIFICATIONS

JetStor SAS 742J

HIGH PERFORMANCE JBOD SYSTEM

**1,600
MB/S!**



Model	JetStor SAS 742J
Host / Expansion Connections	Three, 6Gbit/sec Serial Attached SCSI (SAS) connections
Disk Interface	6Gbit SAS2, SATA3
Drives (unit)	42, 3.5"
Management / Monitor port support	Yes
SMTP manager and SNMP agent	Yes
Enclosure	
Tray lock	Yes
Disk status indicators	Access / Fail LED
Single Backplane	SAS2 / SATA3 Cableless
PS/Fan modules	Two 1100W w/PFC
Turbo Fans	Eleven
Power Requirements	AC 90V-254V Full Range, 50Hz-60Hz
Environmental	
Relative Humidity	10% - 85% Non-condensing
Operating Temperature	50°F - 104°F (10°C ~ 40°C)
Physical Dimensions (W x D x H)	19" x 32" x 6.9"
Weight (Without drives)	107 lbs (48.5 kg)
Compatibility	
Operating Systems	VMWare ESX Server, vSphere, Windows Server 2008, Windows Server 2003, XenServer, Oracle/Solaris, Linux, MAC OS X
SAS Drives	3.5": 300GB, 450GB, 600GB, 1TB, 2TB, 3TB, 4TB and 6TB
SATA Drives	3.5": 1TB, 2TB, 3TB, 4TB and 6TB

JBOD FEATURES

- 42 hot-swappable drive bays in a rackmount 4U chassis
- Single SAS2 JBOD controller module
- Each SAS2 JBOD controller module consists of three mini SAS (4x) port
- Global & dedicated hot spares
- Power supply and cooling system contained in 1 module for efficient cooling
- Two 1100W redundant hot swappable power supplies
- Incorporates a cableless design for maximum signal integrity
- Utilizes industry-standard SCSI Enclosure Services to monitor enclosure and disk environmental conditions
- System LED indications
- System voltage monitoring

MANUFACTURER



www.raid.com
sales@acnc.com
800.213.2667

Advanced Computer & Network Corporation

5001 Baum Boulevard, Suite 680
Pittsburgh, PA 15213
Phone: 412.683.9010
Fax: 412.683.9070
Support: 888.686.2262
Europe: +44 (0)1628 891616
GSA Schedule: GS-35F-0694J
CMAS: 3-00-70-1230A

SYSTEM FEATURES

- Menu driven front LCD display
- Innovative modular architecture
- Redundant flash image for high availability
- Multiple array enclosures per host connection
- Volume sets greater than 2TB (64-bit LBA support)
- Disk drives greater than 2TB
- Supports Windows 4KB/sector, up to 16TB per volume set
- Disk scrubbing / array verification scheduling for automatic repair of all RAID sets
- Records logins in the event log with IP address and service (http, telnet and serial)
- Supports intelligent power management to save energy and extend service life
- NTP protocol RAID controller clock synchronization
- Background initialization for instant availability
- Supports S.M.A.R.T, NCQ and OOB staggered spin-up capable drives
- Local audible event notification alarm
- Real time clock support