

# JetStor®

Storage. Solutions. Support.

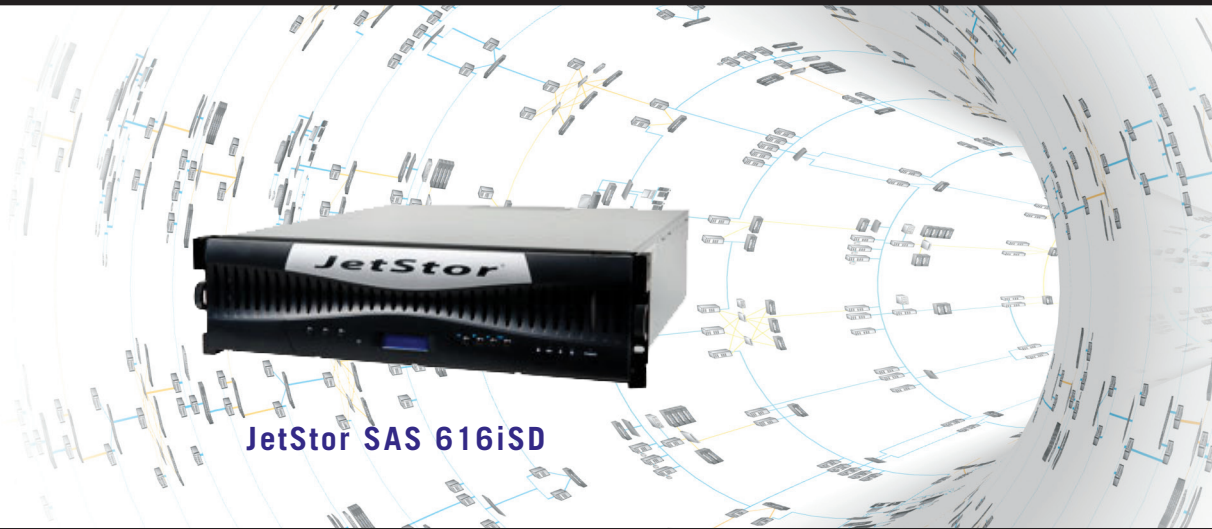
SAS

3U

16 BAY

## JetStor SAS 616iSD HIGH PERFORMANCE RAID SYSTEM

**1,600  
MB/S!**



**JetStor SAS 616iSD**

The JetStor SAS 616iSD RAID system delivers 1,600 MB/second through 1Gb/sec Ethernet host connections to enable the most demanding applications. Outstanding throughput coupled with fast random access eliminates bottlenecks in your most demanding applications, diminishing response times and increasing productivity. The JetStor SAS 616iSD RAID system accelerates databases, file servers, production applications, imaging, and any application demanding the instantaneous delivery of records, small and large files.

### HIGHLY AVAILABLE DESIGN

JetStor SAS 616iSD RAID system features fail-safe engineering for non-stop operations. A fully cableless design improves reliability. Dual hot-swappable power supplies with integrated turbo-cooling and separate power connections, and dual hot-swappable controllers provide system tolerance of any component failure. SNMP or SMTP email notifications of all system events enables proactive maintenance.

### NON-STOP ADS AVAILABILITY

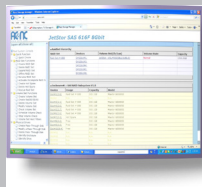
Almost all RAID levels are supported for precise configuration to your application's performance and protection requirements. Multiple drives may be designated as hot-spares allowing the system to transparently move data to a spare should an error be detected. Drives are hot-swappable, with automatic rebuilding of data on the new drive. Capacity can be increased and drives replaced while data remains on-line. Each system offers high-capacity expansion to multiple JBOD chassis with total storage measured in terabytes. For the greatest protection, RAID 6 with Advanced Data Sentry technology allows for continuous operations even with two simultaneous drive failures. Considering that RAID 6 ADS provides 1,000 times greater data protection than RAID 5, why trust your data to any other technology?

### FEATURES

- Up to 1,600 MB/sec performance through four 1Gb/sec Ethernet host connections to support your most demanding applications.
- RAID Manager browser based GUI management and monitoring software allows you to remotely configure and manage all JetStor systems with e-mail event notification.
- Supports all Operating Systems, both single and clustered.
- Field-replaceable major components allow for maximum convenience, uptime and configuration flexibility.
- Free telephone and email support.

### WARRANTY

- Three to five years on disk drives, one year on BBM, three years on all other components.
- Optional advanced replacement program ships drive replacements within 24 hours. Optional on-site service also available.



### RAID MANAGER

Proactively manage, configure and monitor all JetStor RAID systems from any browser.

[www.raid.com](http://www.raid.com)  
[sales@acnc.com](mailto:sales@acnc.com)  
**800.213.2667**

**vmware**  
READY

# JetStor<sup>®</sup>

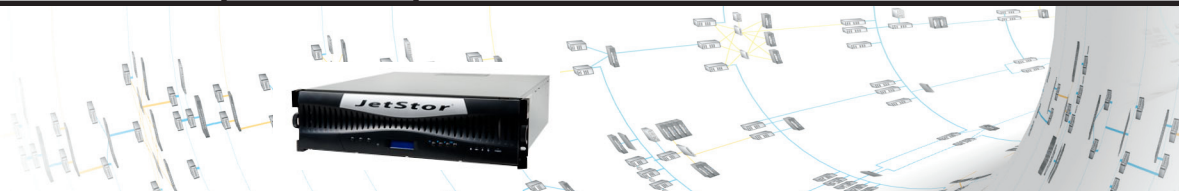
Storage. Solutions. Support.

## SPECIFICATIONS

# JetStor SAS 616iSD

## HIGH PERFORMANCE RAID SYSTEM

# 1,600 MB/S!



Model	JetStor SAS 616iSD
8Gb/s FC-AL Host Interfaces	Four
Disk Interface	3Gb/s SAS
3Gb/s SAS Expansion Ports	Two
Drives (unit / expansion)	16, 3.5"/Up to 80
Processor type	Intel Xscale 64-bit RISC Processor
Cache memory	2GB(default)-4GB(optional)/DDR2-800 ECC REG SDRAM
Battery backup	Optional
Management / Monitor port support	Yes
SMTP manager and SNMP agent	Yes
<b>Enclosure</b>	
Tray lock	Yes
Disk status indicators	Access / Fail LED
Single Backplane	SAS / SATA2 Cableless
PS/Fan modules	Two 460W w/PFC
Turbo Fans	Two
Power	110 or 220 VAC, ±20% @ 6 amps / 3 amps peak; 47 to 63 Hz. autosensing
<b>Environmental</b>	
Relative Humidity	5% - 90% Non-condensing
Operating Temperature	32°F - 104°F (0°C ~ 40°C)
Physical Dimensions (W x D x H)	19"x22"x5.25" 483mm x 559mm x 133mm
Weight (Without drives)	40 lbs (18 Kg)
<b>Compatibility</b>	
Operating Systems	VMWare ESX Server, vSphere, Windows Server 2008, Windows Server 2003, XenServer, Oracle/Solaris, Linux, MAC OS X, and others to be announced
SAS Drives	3.5": 300GB, 450GB, 600GB, 1TB, 2TB, 3TB and 4TB

## RAID FEATURES

- RAID Levels 0, 1,10(1E), 3, 5, 6, 30, 50, 60, JBOD
- Up to 128 Array groups
- Up to 128 LUNs
- Global & dedicated hot spares
- Simultaneous online expansion and RAID migration
- Drive roaming
- Online rebuild
- Variable stripe size
- E-mail notification
- Online capacity expansion
- Online volume set expansion
- RAID level/stripe size migration
- Online array roaming
- Online consistency check
- Instant availability and background initialization
- S.M.A.R.T. support
- MAID 2.0
- Bad block auto-remapping

## SYSTEM FEATURES

- Menu driven front LCD display
- Innovative modular architecture
- Redundant flash image for high availability
- Multiple array enclosures per host connection
- Volume sets greater than 2TB (64-bit LBA support)
- Disk drives greater than 2TB
- Supports Windows 4KB/sector, up to 16TB per volume set
- Disk scrubbing / array verification scheduling for automatic repair of all RAID sets
- Records logins in the event log with IP address and service (http, telnet and serial)
- Supports intelligent power management to save energy and extend service life
- NTP protocol RAID controller clock synchronization
- Background initialization for instant availability
- Supports S.M.A.R.T, NCQ and OOB staggered spin-up capable drives
- Local audible event notification alarm
- Real time clock support

## MANUFACTURER



[www.raid.com](http://www.raid.com)  
[sales@acnc.com](mailto:sales@acnc.com)  
800.213.2667

### Advanced Computer & Network Corporation

5001 Baum Boulevard, Suite 680  
Pittsburgh, PA 15213  
Phone: 412.683.9010  
Fax: 412.683.9070  
Support: 800.213.2667  
Europe: +44 (0)1628 891616  
GSA Schedule: GS-35F-0694J  
CMAS: 3-00-70-1230A